



Monitored Access Panel

HS MAP



The global standard in
security hardware solutions



Monitored Access Panel

HS MAP

The only secured Monitored Access Panel on the international market.

The **Monitored Access Panel** can be used as part of an intrusion alarm system or other monitored instrumentation or building management system. The product can be used in ceilings or walls and provides detection when a hatch is opened.



HIGHLIGHTING FEATURES

-  Concealed fixings provide ultimate strength & security

CONSTRUCTION

- 3mm mild steel
- Concealed hinge bolts
- Welded hinges

DIMENSIONS

- Standard size 450mm x 450mm access opening
- Standard size 600mm x 600mm access opening
- Standard sizes 250mm | 450mm | 600mm opening sizes

COMPONENTS

- Includes an AMS62-10 MKII Lock Monitoring Box
- Lockwood 35791 deadbolt
- Balanced gas struts to support the door
- Weld on hinges

APPLICATIONS

- Ceilings and walls for secure rooms
- General commercial
- Fits all end of line modules
- Alarm activation
- For use in building management systems (BMS)

SUITABLE FOR

- Government and commercial buildings
- Airports
- Train stations
- Education institutions
- Hospitals
- Critical infrastructure and more

OPTIONS

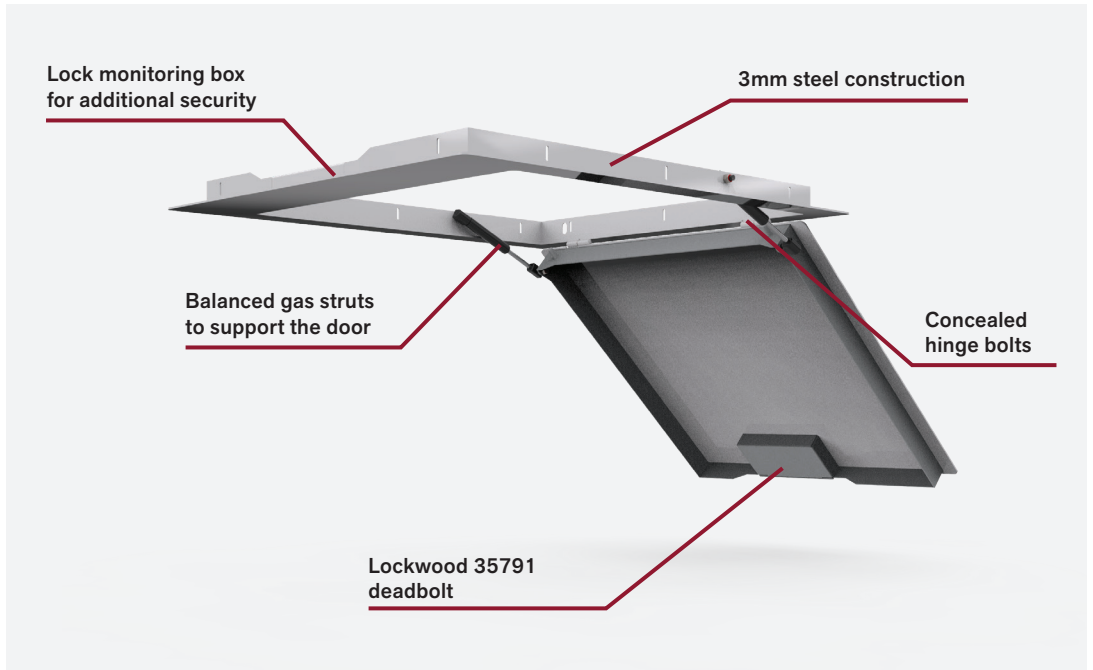
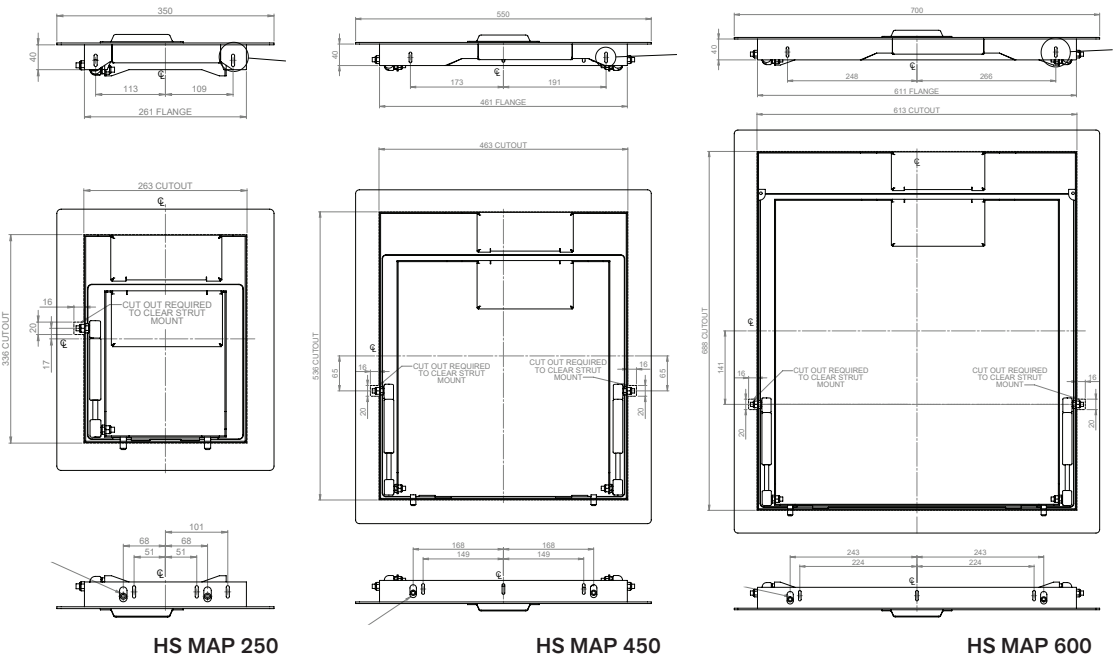
- Supplied non-monitored if required
- Supplied with C4 cylinder or restricted cylinder (optional extra)
- Can be supplied with different powdercoat colour options
- Custom sizes available

MONITORED ACCESS PANEL - HS MAP



LET'S TALK SECURITY

SCAN TO WATCH HS-MAP VIDEO



HS MAP

HOW TO ORDER

Product Code	Product Finish	Product Description
HS MAP - 250	Mild steel	Monitored Access Panel
HS MAP - 450	Mild steel	Monitored Access Panel
HS MAP - 600	Mild steel	Monitored Access Panel



**The global standard
in security hardware
solutions**

We design and manufacture a range of security products that are compatible with existing lock and door furniture.



AMS AUSTRALIA PTY LTD
6/13 Brookes Street,
Mitchell ACT 2911
T: +61 2 6262 2100
E: info@amsaustralia.com.au
www.amsaustralia.com.au